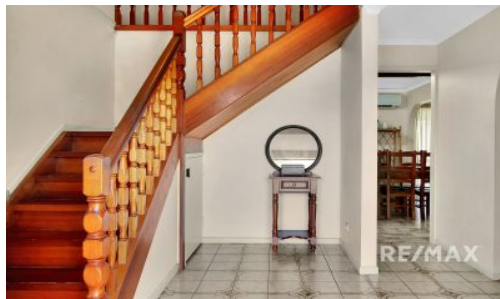


SOLD



4 Apley Court, Carindale

Sold prior to Auction

Offering a peaceful entertainment lifestyle around a large inground swimming pool this spectacular double storey family home is only a short stroll from scenic parklands and the Westfield Carindale Shopping Centre. Ideally located in a quiet cul-de-sac, this 5 bedroom home offers lots of space for the growing and established family.

From the entrance hallway, the different spaces flow practically into one another, but still retaining privacy. The massive lounge room connects with the open-plan dining-kitchen and flows into the outdoor entertainment area and the inground pool. Here in the backyard, the passionate gardener has enough space to create a much-loved veggie garden, lush garden beds with still enough space for the kids to play....

The ground le...

5  3  2 

Price: \$900,000

View: <https://remaxexperience.com.au/6336995>

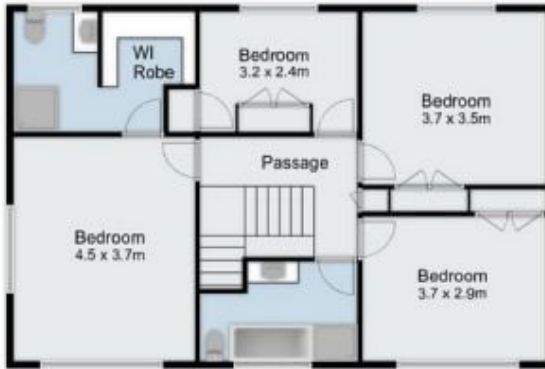
David Cotterill

M 0433 230 680

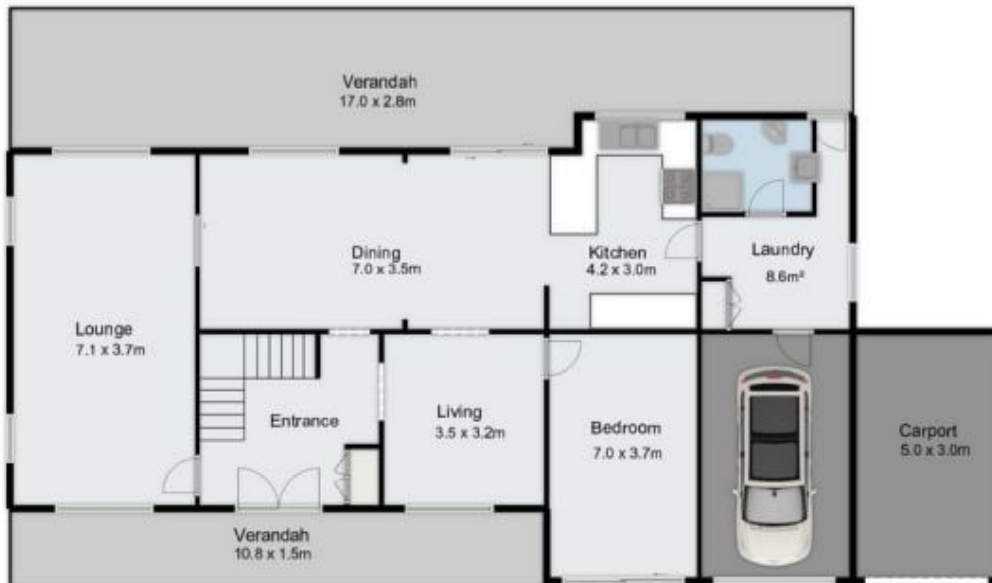


RE/MAX Experience

RE/MAX Experience



Upper Level



Lower Level

Lower level 151m²
 Upper level 75m²
 Total 226m²

External 65m²

Plans are only indicative of layout.
 Dimensions are approximate.

Land size 673m²



4 Apley Court, Carindale Qld